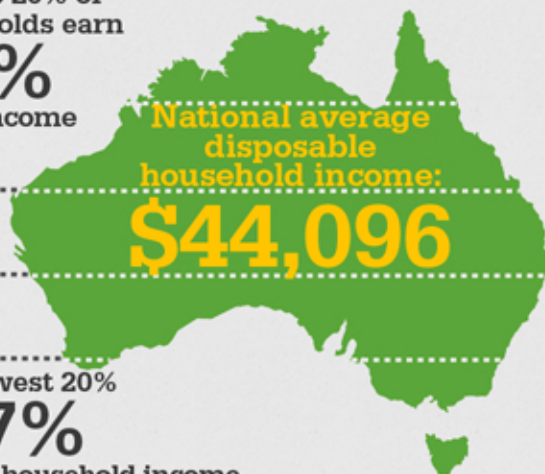


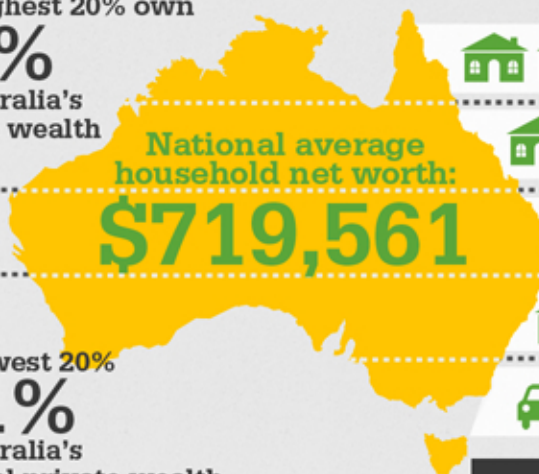
Australian income & wealth distribution

The top 20% of households earn **40%** of all income

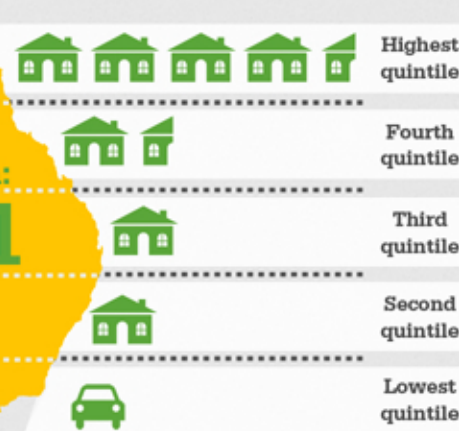


The avg earnings of the top 20% are **5x** the avg earnings of the bottom 20%

The highest 20% own **62%** of Australia's private wealth



The lowest 20% own just **1%** of Australia's national private wealth



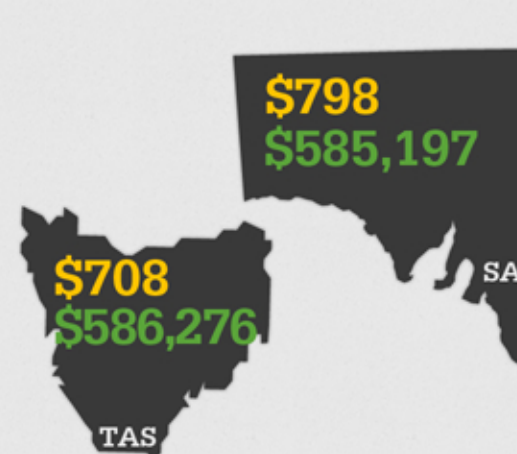
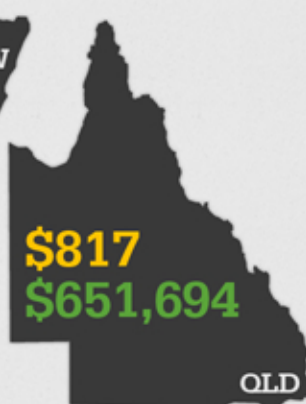
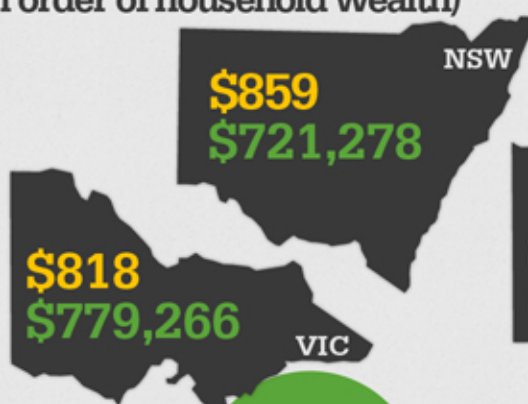
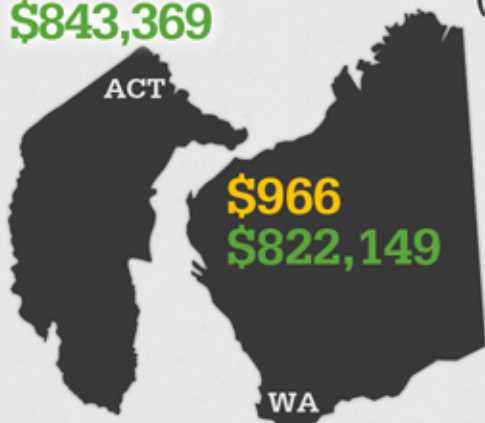
The wealth of the avg household in the top 20% is **70x** above the avg of those in the bottom 20%

Key: 🏠 \$500,000 🚗 \$30,000

State Breakdown

(in order of household wealth)

\$1,101
\$843,369



Generational Breakdown

(who owns Australia's wealth?)

% OF POP

% NATIONAL WEALTH

