

IMMIGRATION IN AUSTRALIA

POPULATION GROWTH, BOAT ARRIVALS & AUSTRALIA'S HUMANITARIAN PROGRAM

TOTAL GROWTH 405,400

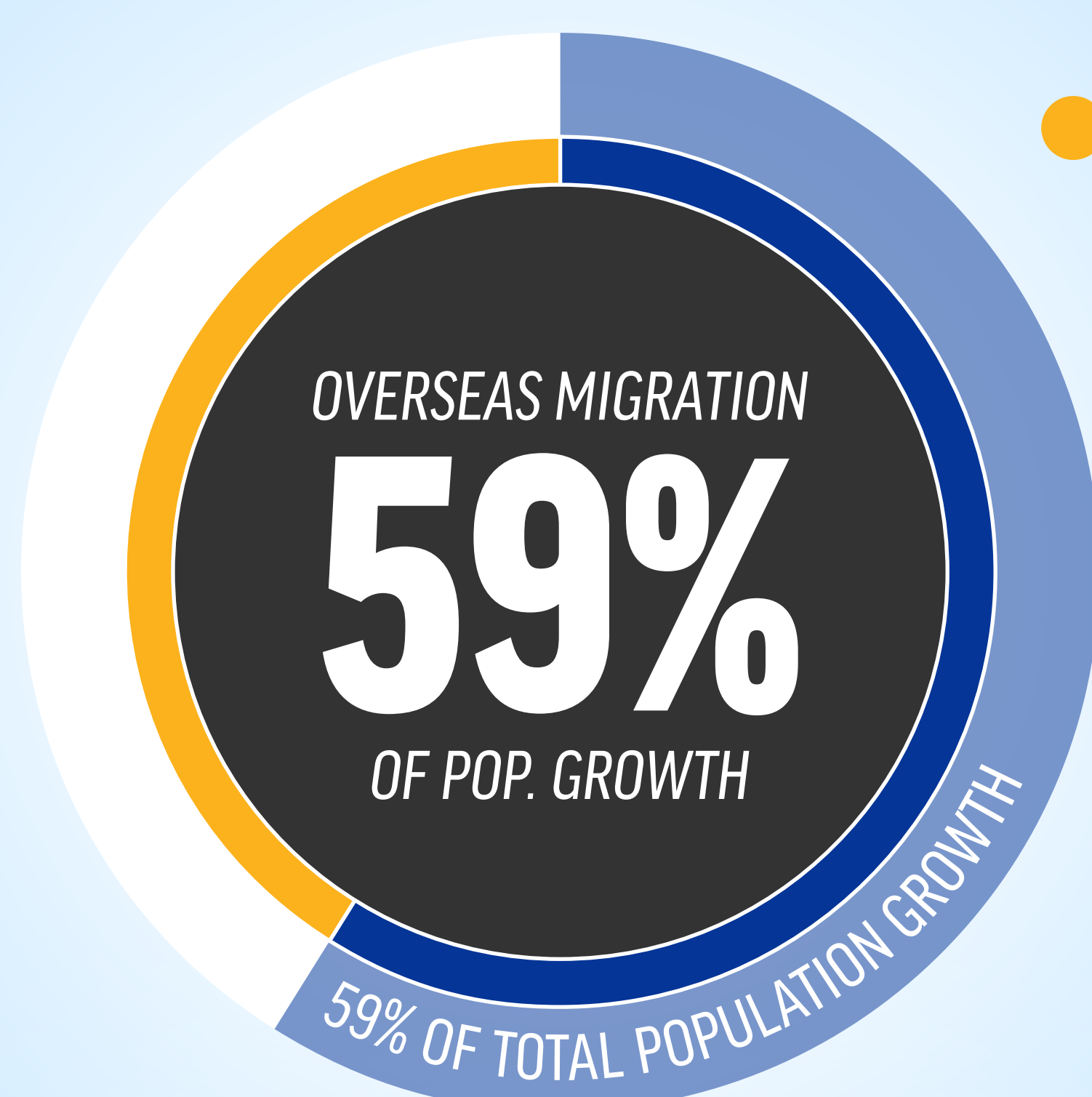
Australia's annual growth rate is 1.8% which was an increase of 405,400 people over the last year.



1.8%
POPULATION GROWTH RATE
405,400
PEOPLE OVER THE LAST YEAR

OVERSEAS MIGRATION 241,000

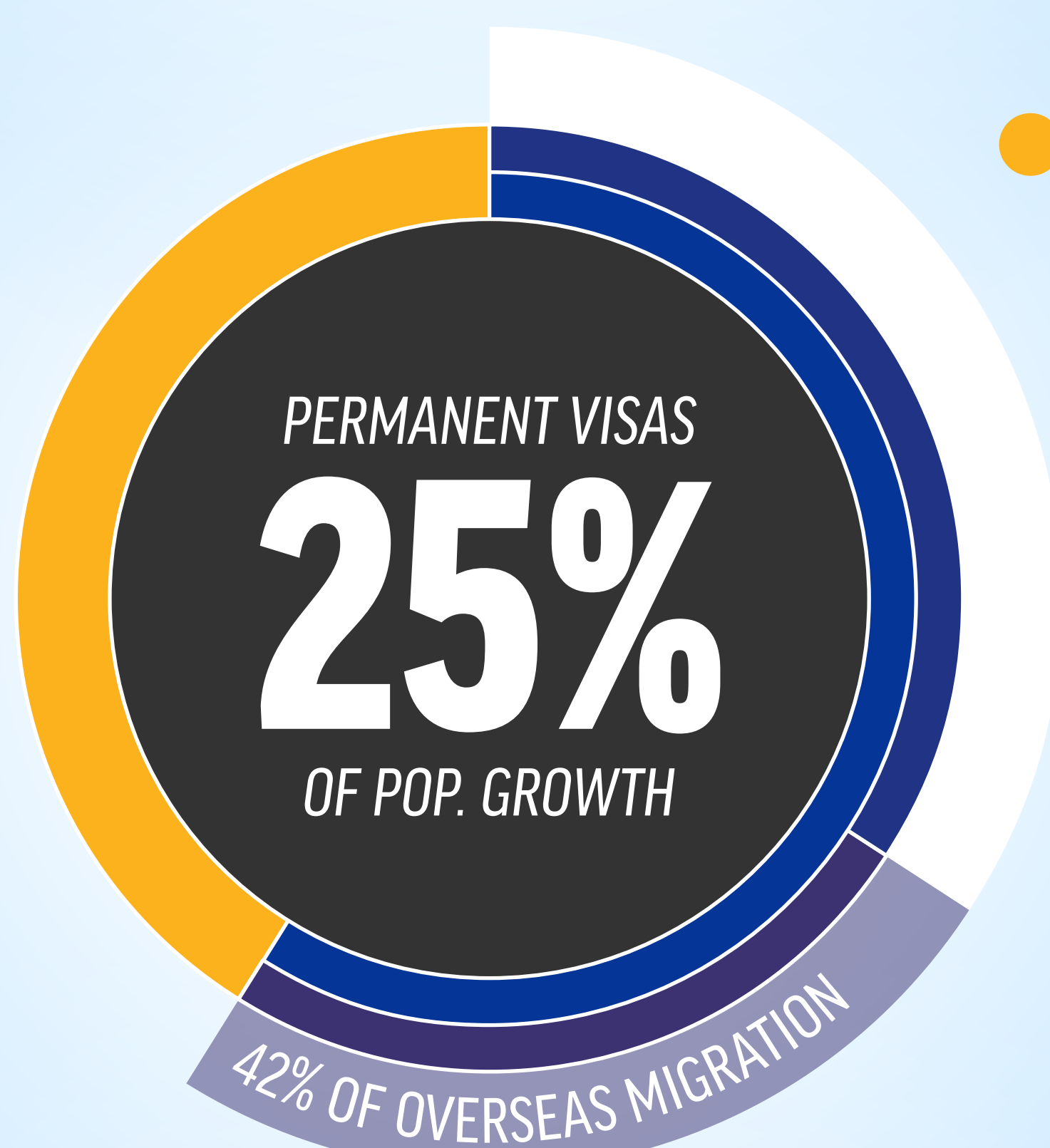
59% of Australia's population increase is through migration which was 241,000 people last year. In 2008 net overseas migration was 315,700 which means that last year migration numbers were 74,700 fewer than 5 years ago. 41% of Australia's growth was through natural increase which was 164,400 people.



- 41% Natural increase
- 59% Overseas migration

PERMANENT VISAS 101,230

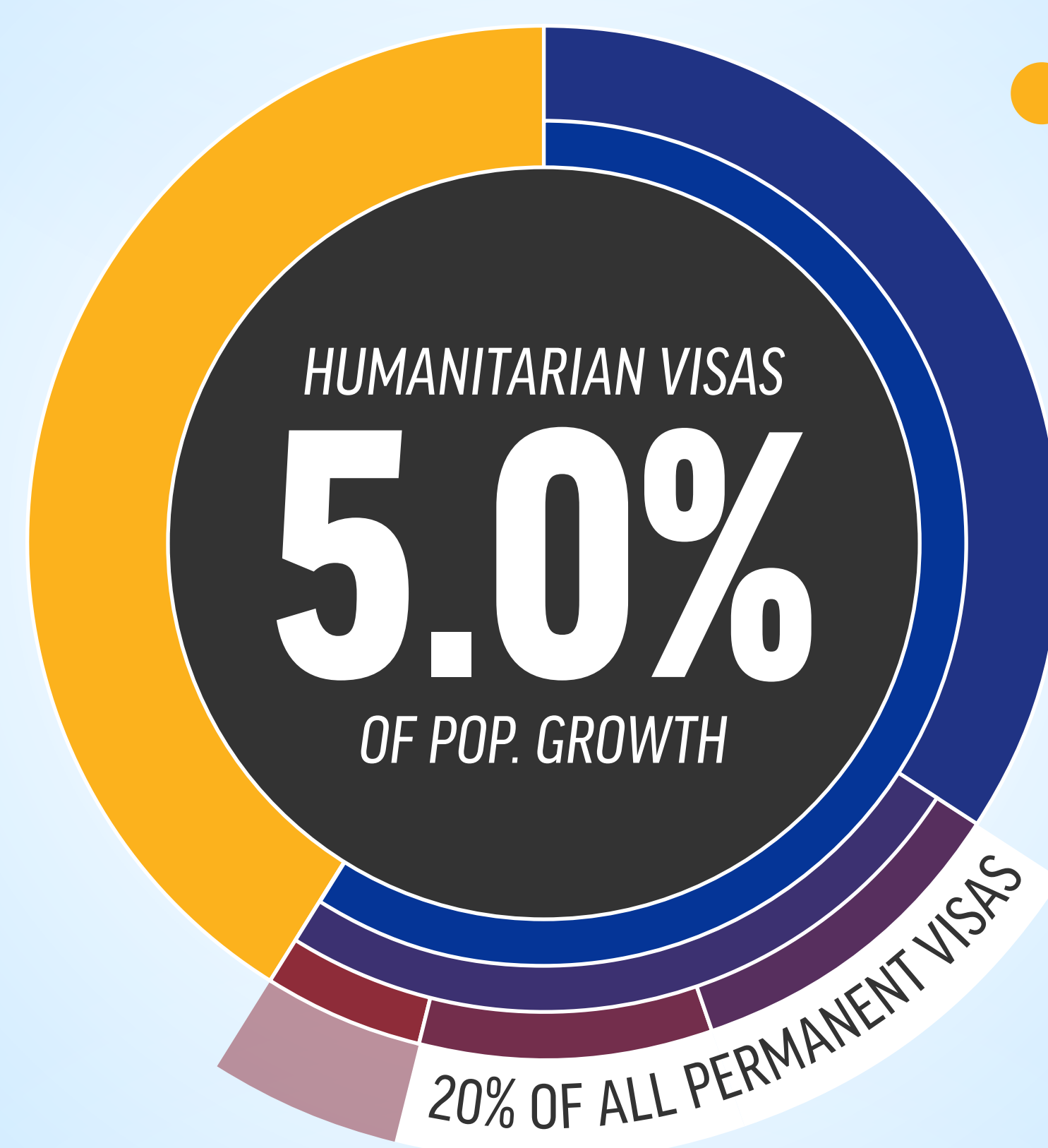
Of the net overseas migration, 58% are granted temporary visas (students, working holiday makers, visitors staying 12 months or more, 457 work visas), and 42% are granted permanent visas (skilled, family and humanitarian).



- 41% Natural increase
- 59% Overseas migration
- 34% Temporary visas
- 25% Permanent visas

HUMANITARIAN VISAS 19,930

20% of the permanent visas comprise Australia's humanitarian program, a total of 19,930 (the rest are skilled visas, 43% and family visas, 37%), and so Australia's humanitarian program accounts for 5% of Australia's population growth.

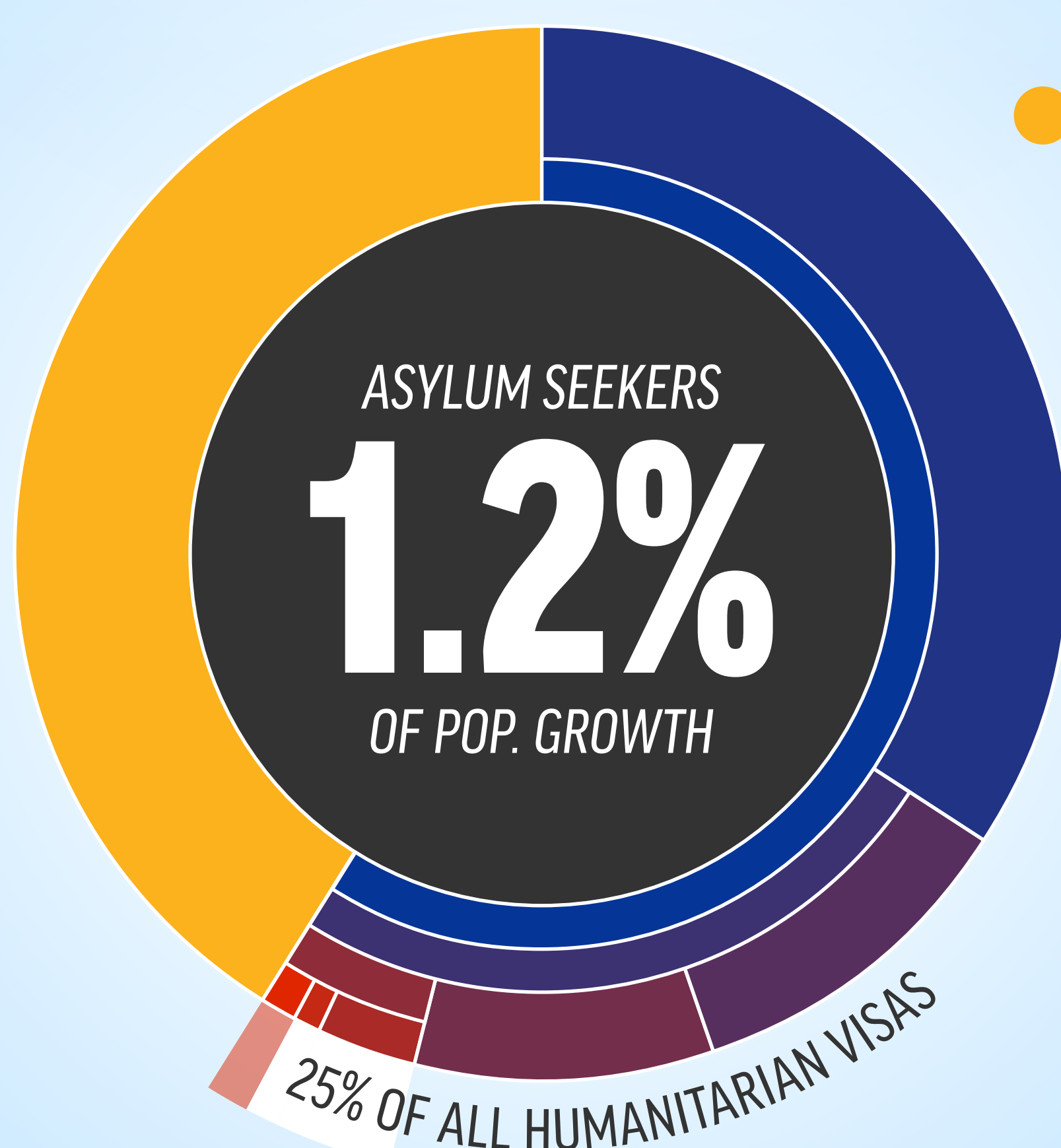


- 41% Natural increase
- 59% Overseas migration
- 34% Temporary visas
- 25% Permanent visas
- 10.8% Skilled visas
- 9.2% Family visas
- 5.0% Humanitarian visas

ASYLUM SEEKERS 4,949

Of the humanitarian visas, 63% are granted offshore, 12% are granted to existing visa holders who are already in Australia, and 25% (4,949) are granted to people who have arrived into Australian territorial waters by boat and are processed in detention centres.

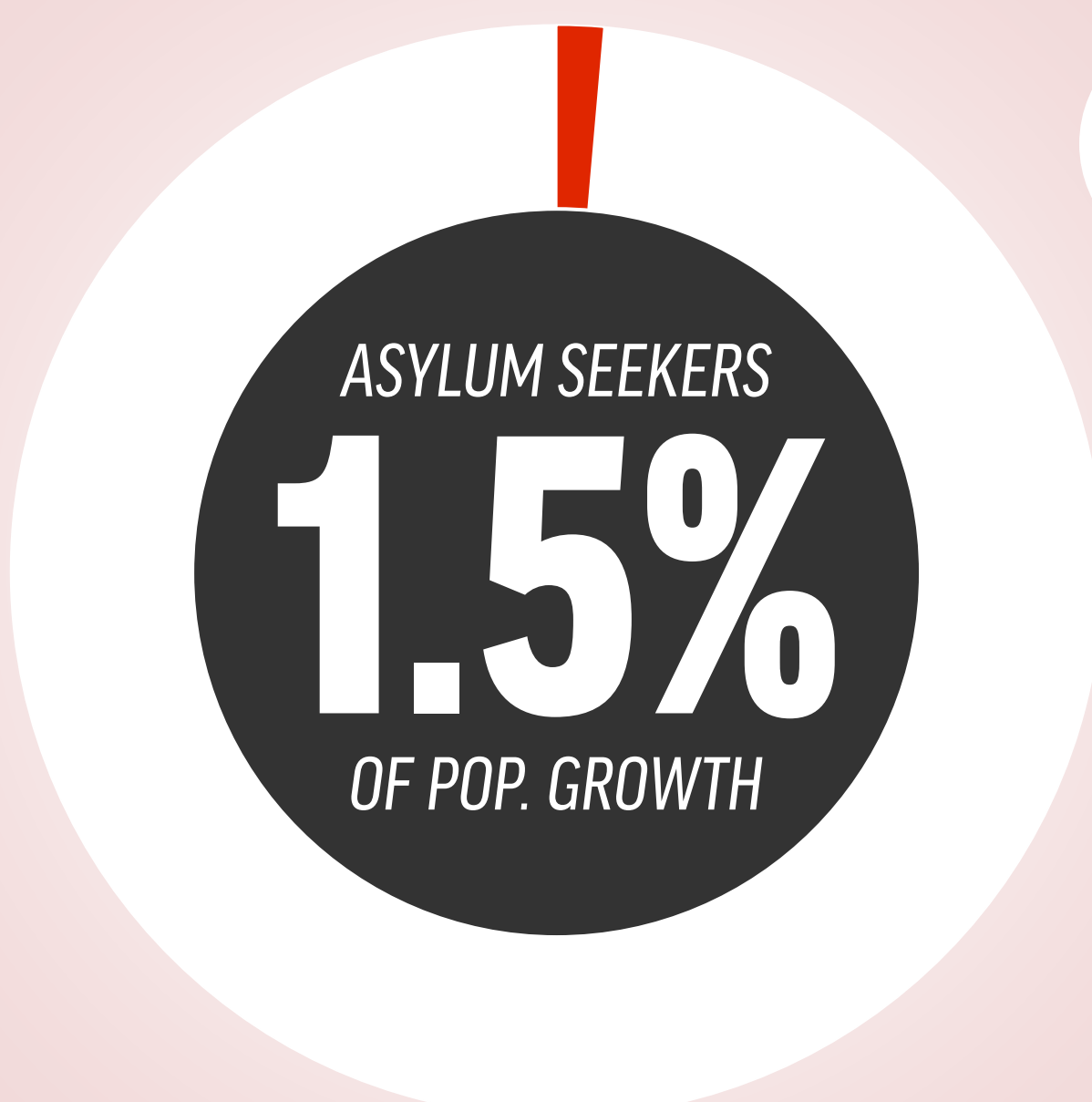
Therefore asylum seekers granted visas account for 1.2% of Australia's population growth.



- 41% Natural increase
- 59% Overseas migration
- 34% Temporary visas
- 25% Permanent visas
- 10.8% Skilled visas
- 9.2% Family visas
- 5.0% Humanitarian visas
- 3.2% Offshore visas
- 0.6% Existing visa holders
- 1.2% Asylum seekers by boat

POPULATION GROWTH AND ASYLUM SEEKERS 2005 - 2014

Even if every asylum seeker who arrived by boat since 2005 (52,017) was granted entry to Australia (and many have returned voluntarily, others have been deported, and still others are yet to have their cases determined), the total number when compared to Australia's population growth over this 9.5 year period (3,514,300) would account for less than 1.5% of Australia's population growth.



TOTAL POP. GROWTH
3,514,300

TOTAL ARRIVALS BY BOAT
52,017 (1.5%)

© i McCrindle 2014

researchvisualisation.com

Sources
Department of Immigration (immi.gov.au)
Australian Bureau of Statistics (abs.gov.au)
Parliamentary Library, Parliament of Australia



52,017 arrivals by boat between 2005 and mid 2014

So total arrivals by boat over almost 10 years is the equivalent of less than 9 weeks of Australian births.

308,100 births for 2013 ▶ 9 weeks of births ◀